

# Magnetic Brake Sensors

Installation



CYC Motor Ltd  
Hong Kong



# How To Install Your Magnetic Brake Sensors

## Requirements



1 to 4 wiring harness with full / half-twist / thumb throttle



Pair of magnetic brake sensors

*Please note that these images are for reference only. Installation should be done on the bike.*

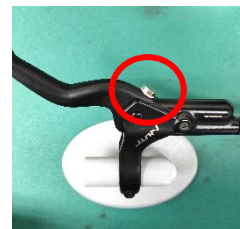
## Step 1 – Connect the harness to the brake sensors

There are arrows for connection alignment on both the wiring harness and brake sensors



## Step 2 – Place the magnet sticker on your brake handle & place the magnet on the sticker

The brake sensors & magnets should be placed right next to each other with the magnet on the inner edge of the brake lever.

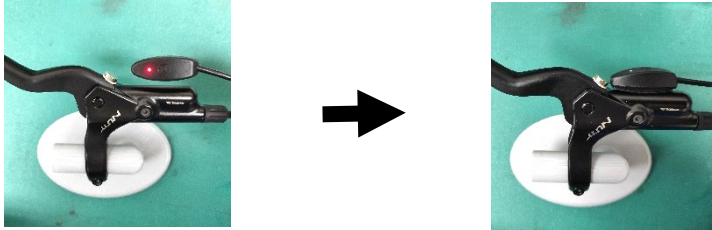




## MAGNETIC BRAKE SENSORS

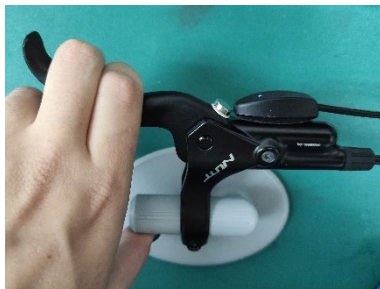
**Step 3 – Take off red tape at the bottom of the sensor & stick the sensor right next to the magnet**

When the kit is fully connected & switched on, the brake sensor will show a red light. As soon as the sensor is right next to the magnet, the light will turn blue.



**Step 4 – Repeat these steps for the sensor on the other brake lever & test it**

The lights on the brake sensors will change when the brakes are pulled: If only 1 brake is pulled at a time, the sensors' lights will be blue & red (almost purple); they will be blue if brakes are not pulled & red if both are pulled together.



Not activated – Blue light



Activated – Red light

Please contact [technical\\_support@cycmotor.com](mailto:technical_support@cycmotor.com) if further assistance is needed.